



Sammamish-Juanita 115 kV Project

Advisory Group Meeting #3B



November 17, 2011



Chapter 1: Response to information requests

Chapter 2: GeoRoute Model

- Tonight's goals
- Review model examples
- Check-in on weighting
- Run model and discuss route options

Chapter 3: Next steps

- Preparing for Dec. 14 open house
- Next meeting



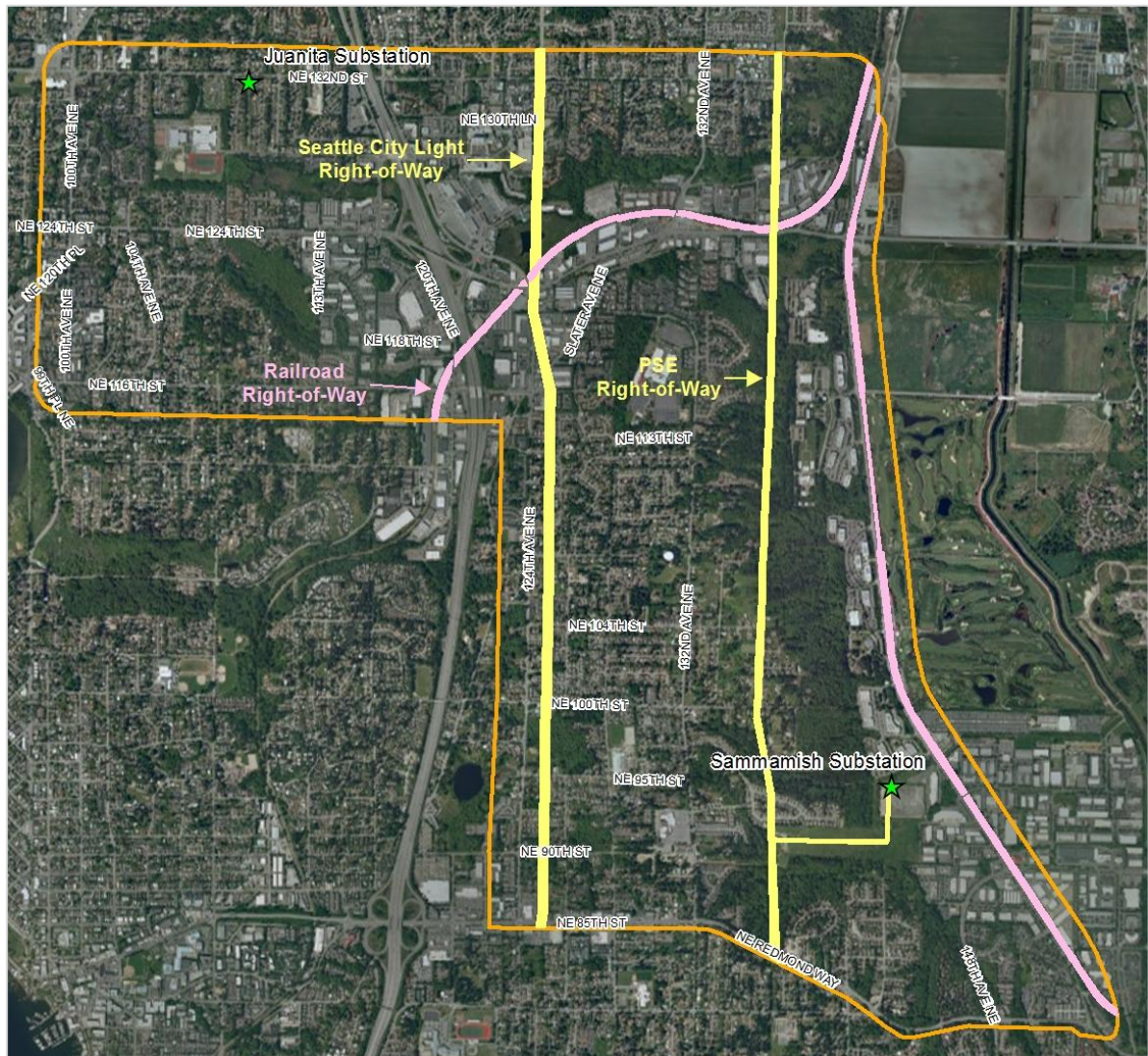
Information requested at Meeting #3A

- Sharing public comments with the advisory group
- Update on railroad corridor rights



Chapter 1: Responses

Existing Rights of Way





■ Rail Corridor Easement

- Port of Seattle granted easement to PSE in 2010
- Within the former BNSF Woodinville to Kenneydale corridor
 - Easement refers to the corridor as the “South Rail Line”
- Covers existing and future facilities
- Allows for electric distribution, electric transmission and natural gas facilities
- Generally 100 feet in width with some variations

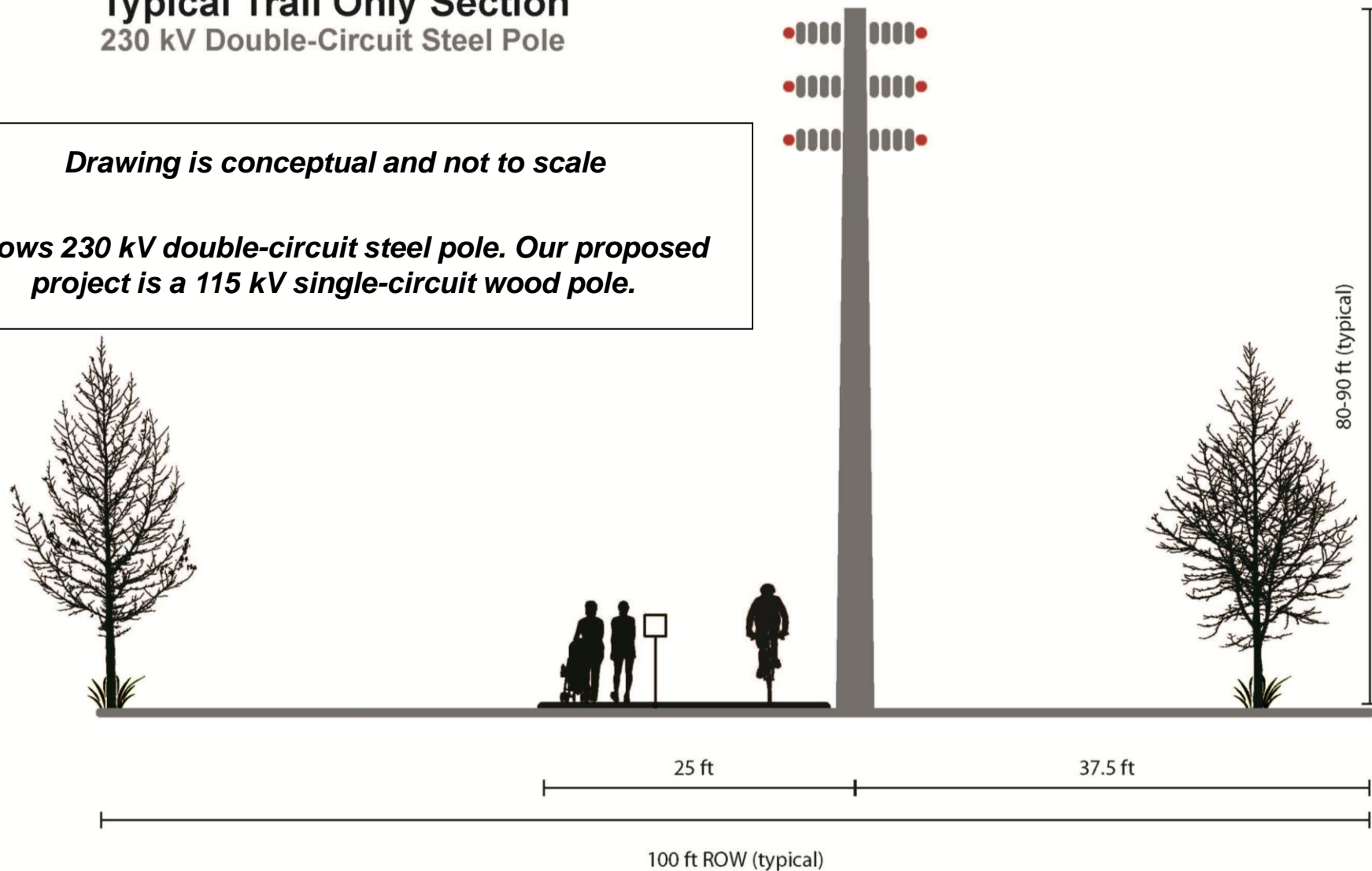


Chapter 1: Responses

Typical Trail Only Section 230 kV Double-Circuit Steel Pole

Drawing is conceptual and not to scale

Shows 230 kV double-circuit steel pole. Our proposed project is a 115 kV single-circuit wood pole.



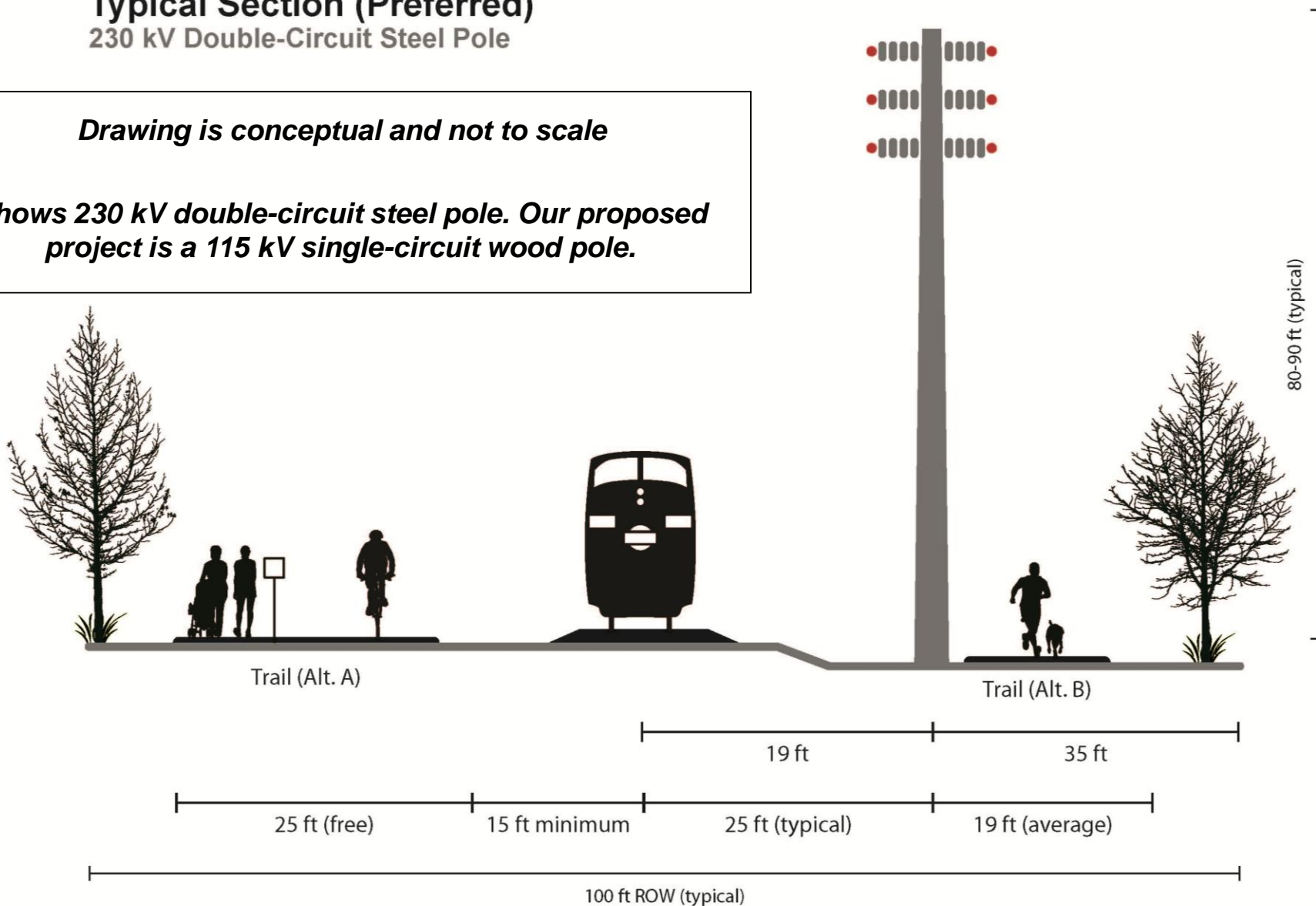


Chapter 1: Responses

Typical Section (Preferred) 230 kV Double-Circuit Steel Pole

Drawing is conceptual and not to scale

Shows 230 kV double-circuit steel pole. Our proposed project is a 115 kV single-circuit wood pole.



- **Easement is subject to:**
 - Trail use agreement between King County and BNSF
 - All other pre-existing rights, including a Public Multipurpose Easement between the Port and King County
- **Easement addresses issues involving:**
 - Railbanking
 - Rails to Trails
 - Potential Freight Rail Reactivation
- **Third-party improvements:**
 - Must be compatible with PSE's easement rights and facilities
 - Must be communicated to PSE in advance of a third party constructing any improvements



Chapter 1: Response to information requests

Chapter 2: GeoRoute Model

- **Tonight's goals**
- **Review model examples**
- **Check-in on weighting**
- **Run model and discuss route options**

Chapter 3: Next steps

- Preparing for Dec. 14 open house
- Next meeting



Tonight's goals

- Use GeoRoute model to develop conceptual route alternatives
- Identify at least three conceptual route alternatives to present at the Dec. 14 open house
- Discuss comments and/or concerns about each alternative



GEOENGINEERS Geo Route

115 kV Transmission Line Route Study
Sammamish – Juanita

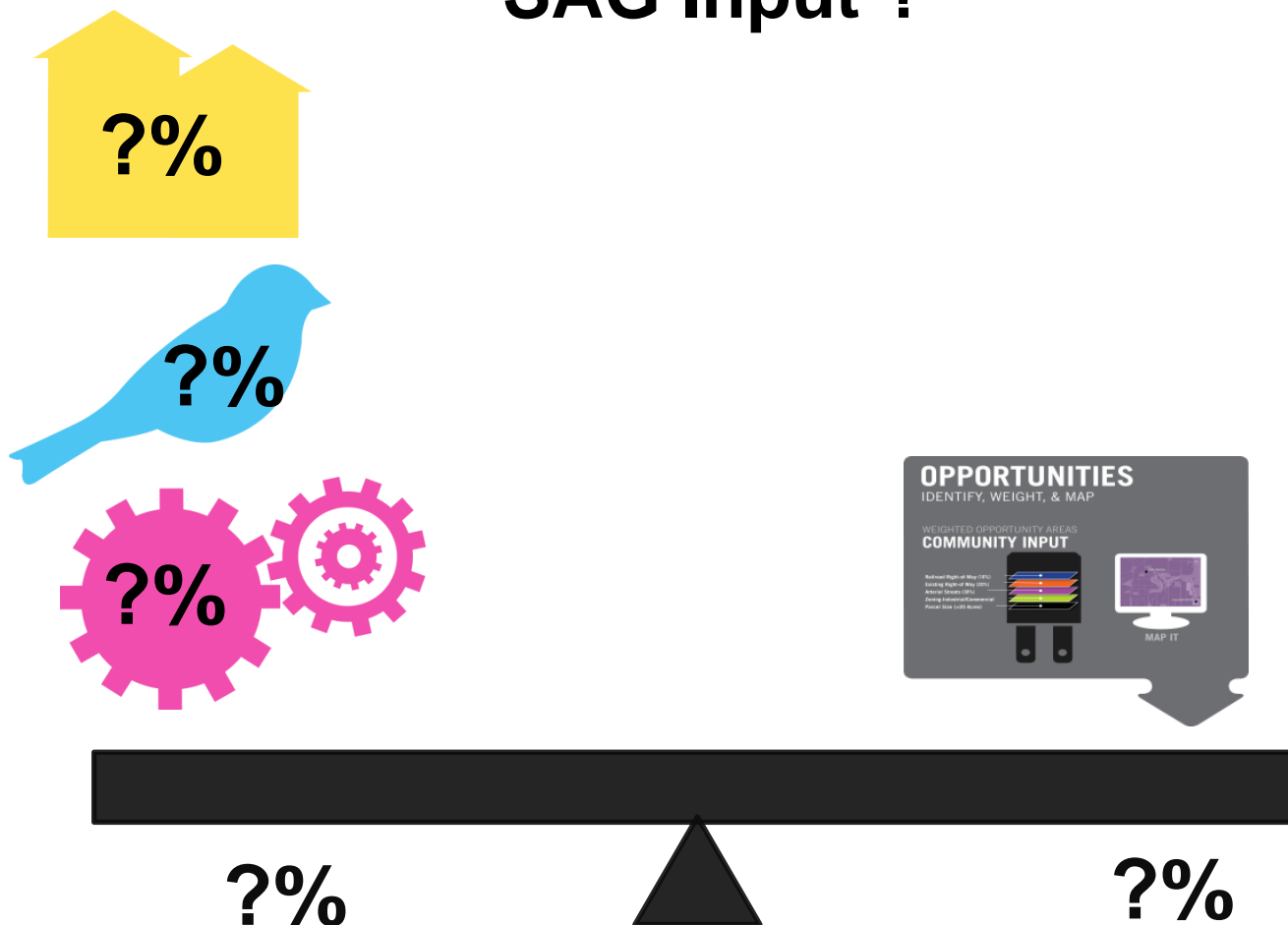
Locating a route for a 115 kV transmission line that is compatible with:

- Sensitive Land Uses
- Sensitive Natural Features
- Engineering Design and Safety Standards
- Community Values





SAG Input ?





Chapter 1: Response to information requests

Chapter 2: GeoRoute Model

- Tonight's goals
- Review model examples
- Check-in on weighting
- Run model and discuss route options

Chapter 3: Next steps

- **Preparing for Dec. 14 open house**
- **Next meeting**



Preparing for Dec. 14 open house

- Check-in on tonight's goals:
 - Which conceptual alternatives does the advisory group want to carry forward?
 - What comments or concerns have been identified for each alternative?
- Next steps for PSE
 - "Red flag" review of conceptual route alternatives
 - Inviting the community to attend the open house



Dec. 14 open house details

- Logistics:
 - Dec. 14 from 5:30 p.m. to 7:30 p.m.
 - Lake Washington Institute of Technology, West Building Room 401
- PSE staff will be available to answer questions about the project work to date
- Advisory group members are encouraged to attend to hear from the community and answer questions one-on-one



January advisory group meeting

- Thursday, Jan. 26
 - 5:30 p.m. to 8:00 p.m. at the Baymont Inn and Suites in Kirkland
- During the meeting, we'll apply community feedback and continue working on routing



Public comment from audience



Questions?

- **Sammamish-Juanita Project Contacts:**

Barry Lombard

Project Manager

barry.lombard@pse.com

425-456-2230

Jason Van Nort

Government and Community Relations Manager

jason.vannort@pse.com

425-462-3820



Thank You!